



PÉRGOLA

INSTALLER AND USER'S MANUAL







00. CONTENT

INDEX

01. SAFETY INSTRUCTIONS	1B
02. AWNING	
PÉRGOLA	4A
TECHNICAL CHARACTERISTICS	4A
03. INSTALLATION	
FIXING BETWEEN WALLS	5
FIXING WALL AND LEG PROFILES	6
FIXING LEG PROFILES	7
MOTOR, FABRIC AND CENTRAL INSTALLATION	8
PERGOLA COVER INSTALLATION	9
04. REGULATION	
LIMIT SWITCHES	10A
MANUAL OPENING/CLOSING	10B
05. TROUBLESHOOTING	
FINAL CONSUMERS AND SPECIALIZED TECHNICIANS INSTRUCTIONS	11

01. SAFETY INSTRUCTIONS

ATTENTION:

	This product is certified in accordance with European Community (EC) safety standards.
	This product complies with Directive 2011/65/EU of the European Parliament and of the Council, of 8 June 2011, on the restriction of the use of certain hazardous substances in electrical and electronic equipment and with Delegated Directive (EU) 2015/863 from Commission.
	(Applicable in countries with recycling systems). This marking on the product or literature indicates that the product and electronic accessories (eg. Charger, USB cable, electronic material, controls, etc.) should not be disposed of as other household waste at the end of its useful life. To avoid possible harm to the environment or human health resulting from the uncontrolled disposal of waste, separate these items from other types of waste and recycle them responsibly to promote the sustainable reuse of material resources. Home users should contact the dealer where they purchased this product or the National Environment Agency for details on where and how they can take these items for environmentally safe recycling. Business users should contact their vendor and check the terms and conditions of the purchase agreement. This product and its electronic accessories should not be mixed with other commercial waste.
	This marking indicates that the product and electronic accessories (eg. charger, USB cable, electronic material, controls, etc.) are susceptible to electric shock by direct or indirect contact with electricity. Be cautious when handling the product and observe all safety procedures in this manual.

01. SAFETY INSTRUCTIONS

GENERAL WARNINGS

- This manual contains very important safety and usage information. very important. Read all instructions carefully before beginning the installation/usage procedures and keep this manual in a safe place that it can be consulted whenever necessary.
- This product is intended for use only as described in this manual. Any other enforcement or operation that is not mentioned is expressly prohibited, as it may damage the product and put people at risk causing serious injuries.
- This manual is intended firstly for specialized technicians, and does not invalidate the user's responsibility to read the "User Norms" section in order to ensure the correct functioning of the product.
- The installation and repair of this product may be done by qualified and specialized technicians, to assure every procedure are carried out in accordance with applicable rules and norms. Nonprofessional and inexperienced users are expressly prohibited of taking any action, unless explicitly requested by specialized technicians to do so.
- Installations must be frequently inspected for unbalance and the wear signals of the cables, springs, hinges, wheels, supports and other mechanical assembly parts.
- Do not use the product if it is necessary repair or adjustment is required.
- When performing maintenance, cleaning and replacement of parts, the product must be disconnected from power supply. Also including any operation that requires opening the product cover.
- The use, cleaning and maintenance of this product may be carried out by any persons aged eight years old and over and persons whose physical, sensorial or mental capacities are lower, or by persons without any knowledge of the product, provided that these are supervision and instructions given by persons with experienced in terms of usage of the product in a safe manner and who understands the risks and dangers involved.
- Children shouldn't play with the product or opening devices to avoid

the motorized door or gate from being triggered involuntarily.

WARNINGS FOR TECHNICIANS

- Before beginning the installation procedures, make sure that you have all the devices and materials necessary to complete the installation of the product.
- You should note your Protection Index (IP) and operating temperature to ensure that is suitable for the installation site.
- Provide the manual of the product to the user and let them know how to handle it in an emergency.
- If the automatism is installed on a gate with a pedestrian door, a door locking mechanism must be installed while the gate is in motion.
- Do not install the product "upside down" or supported by elements do not support its weight. If necessary, add brackets at strategic points to ensure the safety of the automatism.
- Do not install the product in explosive site.
- Safety devices must protect the possible crushing, cutting, transport and danger areas of the motorized door or gate.
- Verify that the elements to be automated (gates, door, windows, blinds, etc.) are in perfect function, aligned and level. Also verify if the necessary mechanical stops are in the appropriate places.
- The central must be installed on a safe place of any fluid (rain, moisture, etc.), dust and pests.
- You must route the various electrical cables through protective tubes, to protect them against mechanical exertions, essentially on the power supply cable. Please note that all the cables must enter the central from the bottom.
- If the automatism is to be installed at a height of more than 2,5m from the ground or other level of access, the minimum safety and health requirements for the use of work equipment workers at the work of Directive 2009/104/CE of European Parliament and of the Council of 16 September 2009.

01. SAFETY INSTRUCTIONS

- Attach the permanent label for the manual release as close as possible to the release mechanism.
- Disconnect means, such as a switch or circuit breaker on the electrical panel, must be provided on the product's fixed power supply leads in accordance with the installation rules.
- If the product to be installed requires power supply of 230Vac or 110Vac, ensure that connection is to an electrical panel with ground connection.
- The product is only powered by low voltage safety with central (only at 24V motors)

WARNINGS FOR USERS

- Keep this manual in a safe place to be consulted whenever necessary.
- If the product has contact with fluids without being prepared, it must immediately disconnect from the power supply to avoid short circuits, and consult a specialized technician.
- Ensure that technician has provided you the product manual and informed you how to handle the product in an emergency.
- If the system requires any repair or modification, unlock the automatism, turn off the power and do not use it until all safety conditions have been met.
- In the event of tripping of circuits breakers or fuse failure, locate the malfunction and solve it before resetting the circuit breaker or replacing the fuse. If the malfunction is not repairable by consult this manual, contact a technician.
- Keep the operation area of the motorized gate free while the gate in motion, and do not create strength to the gate movement.
- Do not perform any operation on mechanical elements or hinges if the product is in motion.

RESPONSABILITY

- Supplier disclaims any liability if:
 - Product failure or deformation result from improper installation use or maintenance!
 - Safety norms are not followed in the installation, use and maintenance of the product.
 - Instructions in this manual are not followed.
 - Damaged is caused by unauthorized modifications
 - In these cases, the warranty is voided.

MOTORLINE ELECTROCELOS SA.

Travessa do Sobreiro, nº29
4755-474 Rio Côvo (Santa Eugénia)
Barcelos, Portugal

SYMBOLS LEGEND:



• Important safety notices



• Useful information



• Programming information



• Potentiometer information



• Connectors information

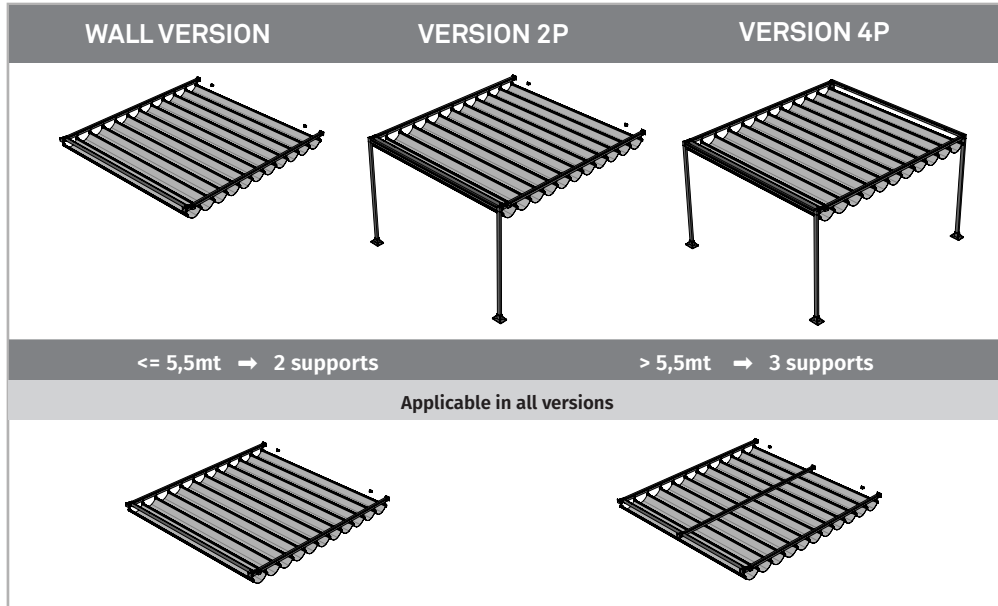


• Buttons information

02. AWNING

PÉRGOLA

The **PERGOLA** awning is a simple and posh awning for sun protection, adaptable to all type of leisure areas such as terraces, pool areas, outdoor dining tables, among others.



TECHNICAL CHARACTERISTICS

The technical characteristics of the **PERGOLA** motor are as follows:

Technical Data of the Motor TUB 90M8 MT

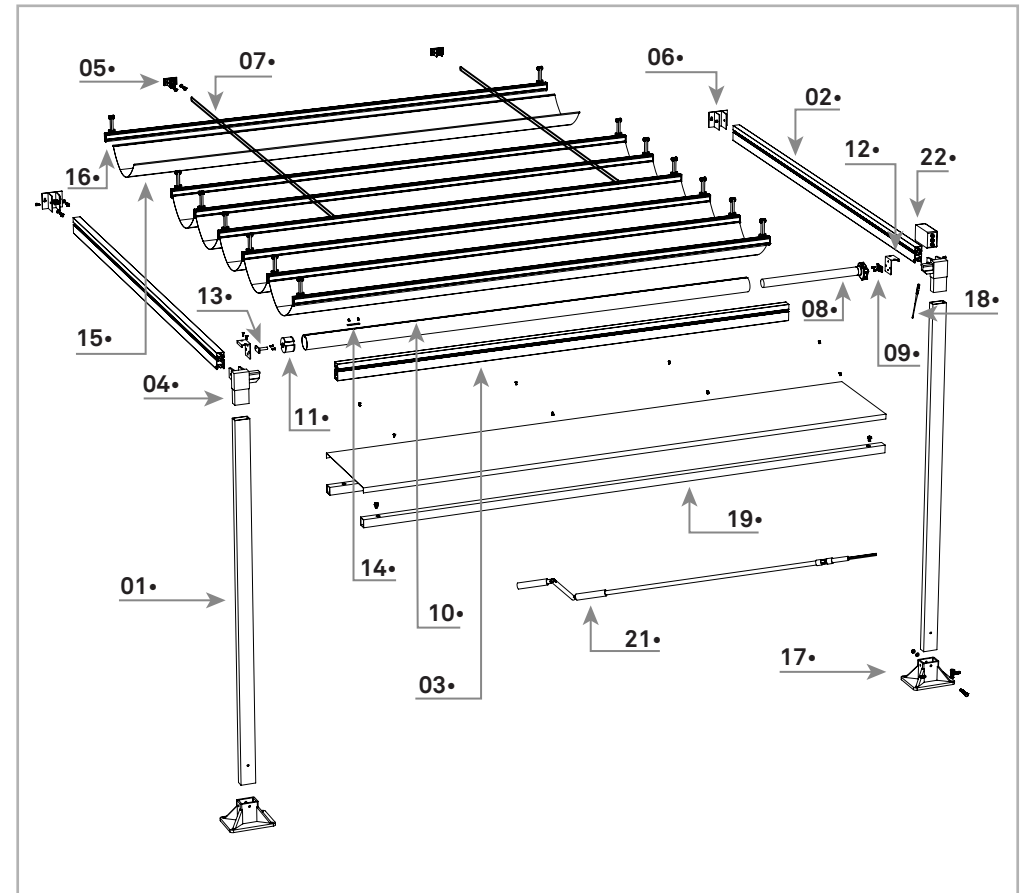
• Voltage	AC 230V 50Hz
• Frequency	227W
• Speed	12RPM
• Force	40Nm
• Lift up	<90Kgs
• Noise	<43dB
• Working Time	4min
• Diameter	ø45mm
• Weight set	3,70Kgs

02. AWNING

TECHNICAL CHARACTERISTICS

On the awning you will find the following components:

- 01• Vertical Profile
- 02• Projection Profile
- 03• Cross Profile
- 04• Union of Profiles
- 05• Pulleys
- 06• Wall Support
- 07• Maneuvering Rope
- 08• Motor TUB90M8 MT
- 09• Motor Support
- 10• Winding tube ø78mm
- 11• Tube Support
- 12• Fixing Plate
- 13• Tube Cap
- 14• Rope Plate
- 15• Fabric
- 16• Fabric Profile
- 17• Fixation Plate
- 18• Adjusting Crank
- 19• Pergola Cover
- 20• FALK Commands
- 21• Hand crank
- 22• Central



03. INSTALLATION

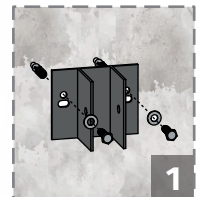
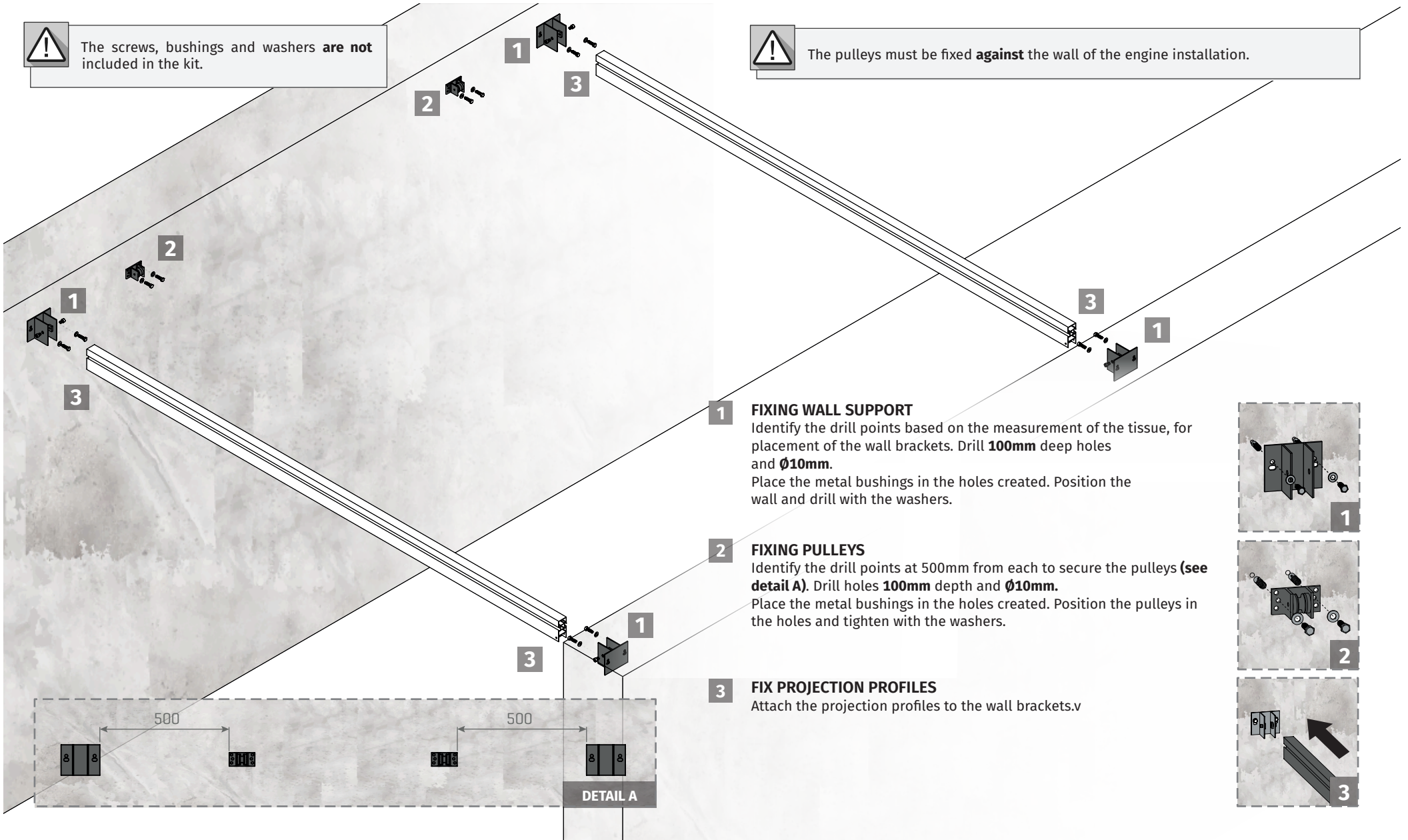
FIXING BETWEEN WALLS



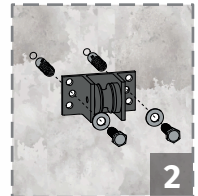
The screws, bushings and washers **are not** included in the kit.



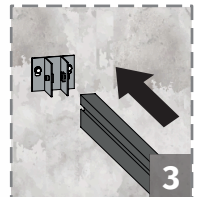
The pulleys must be fixed **against** the wall of the engine installation.



1



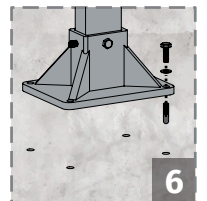
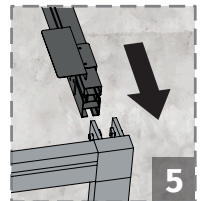
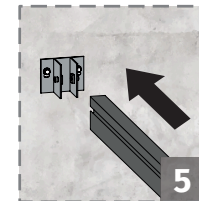
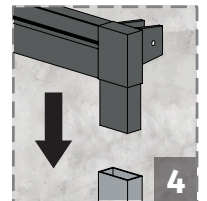
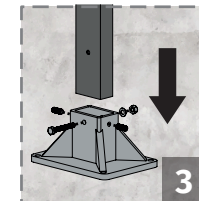
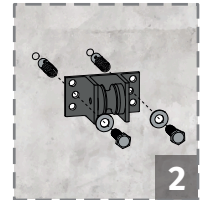
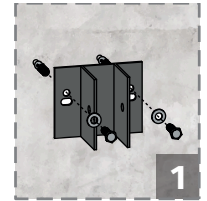
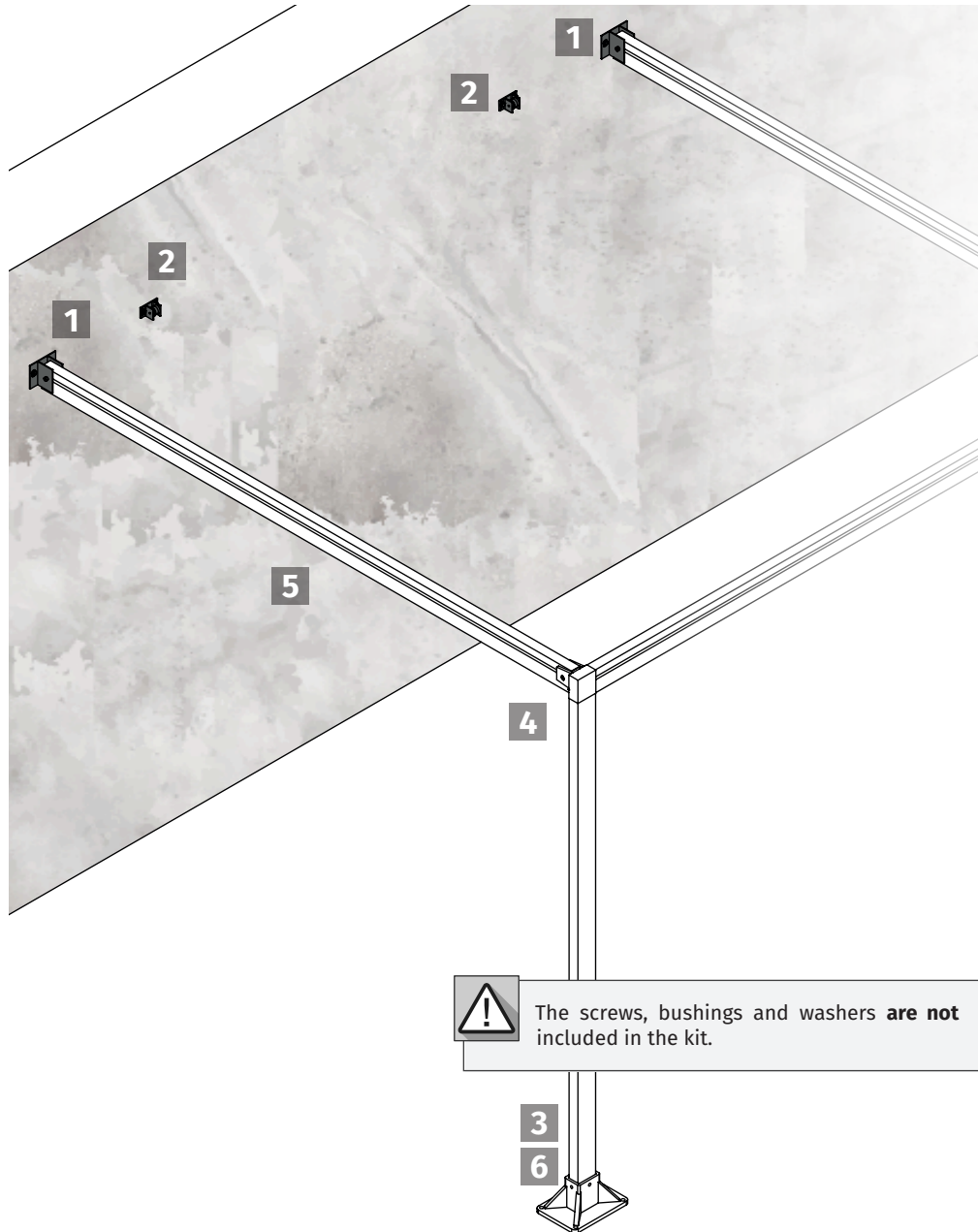
2



3

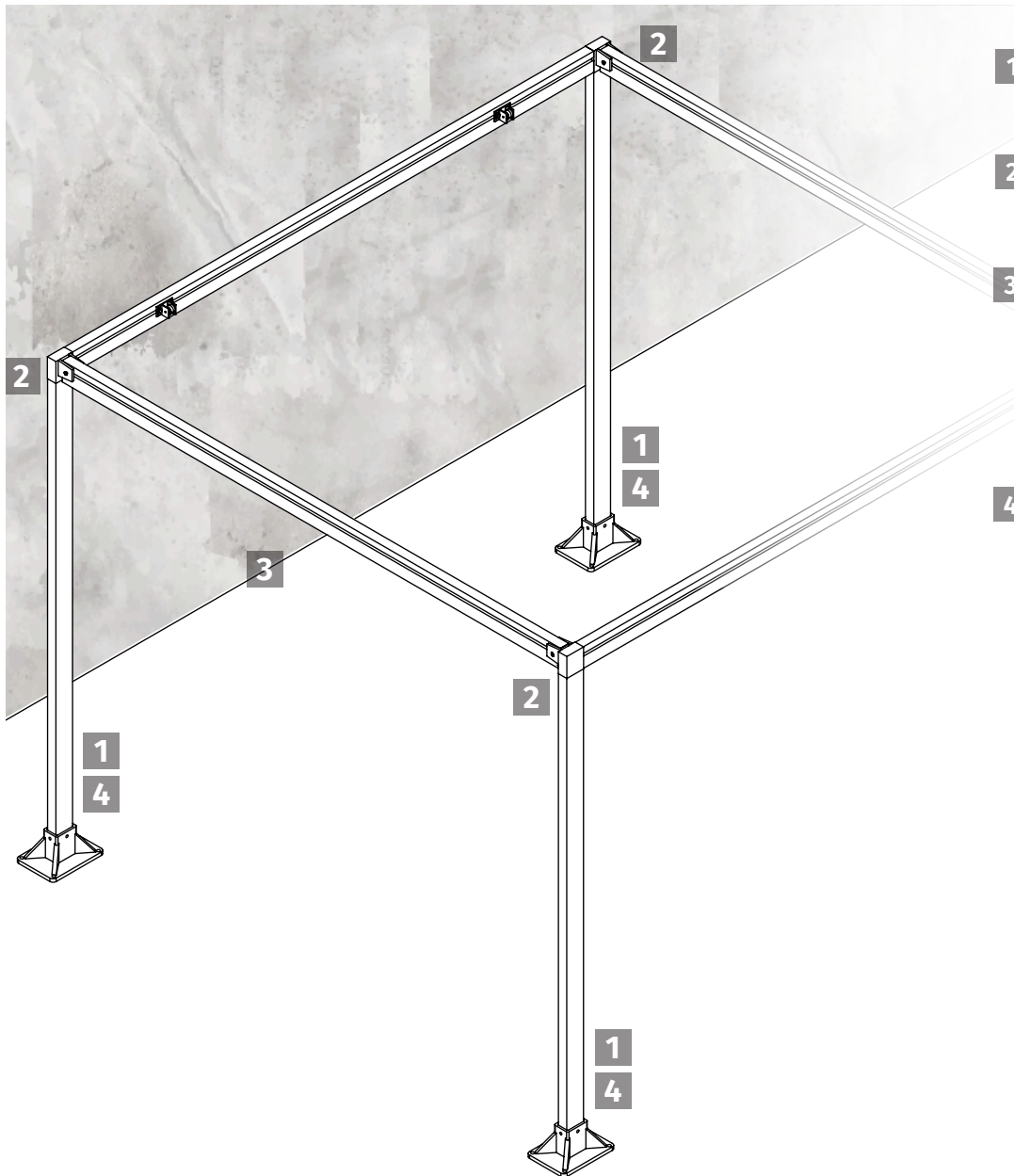
03. INSTALLATION

FIXING WALL AND LEG PROFILES

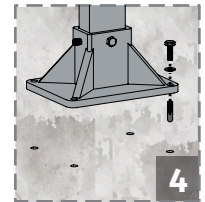
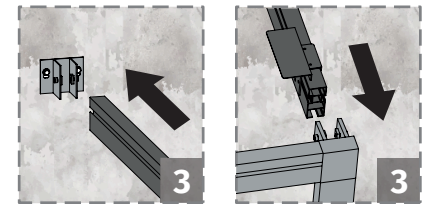
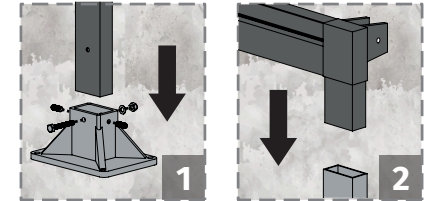


03. INSTALLATION

FIXING LEG PROFILES



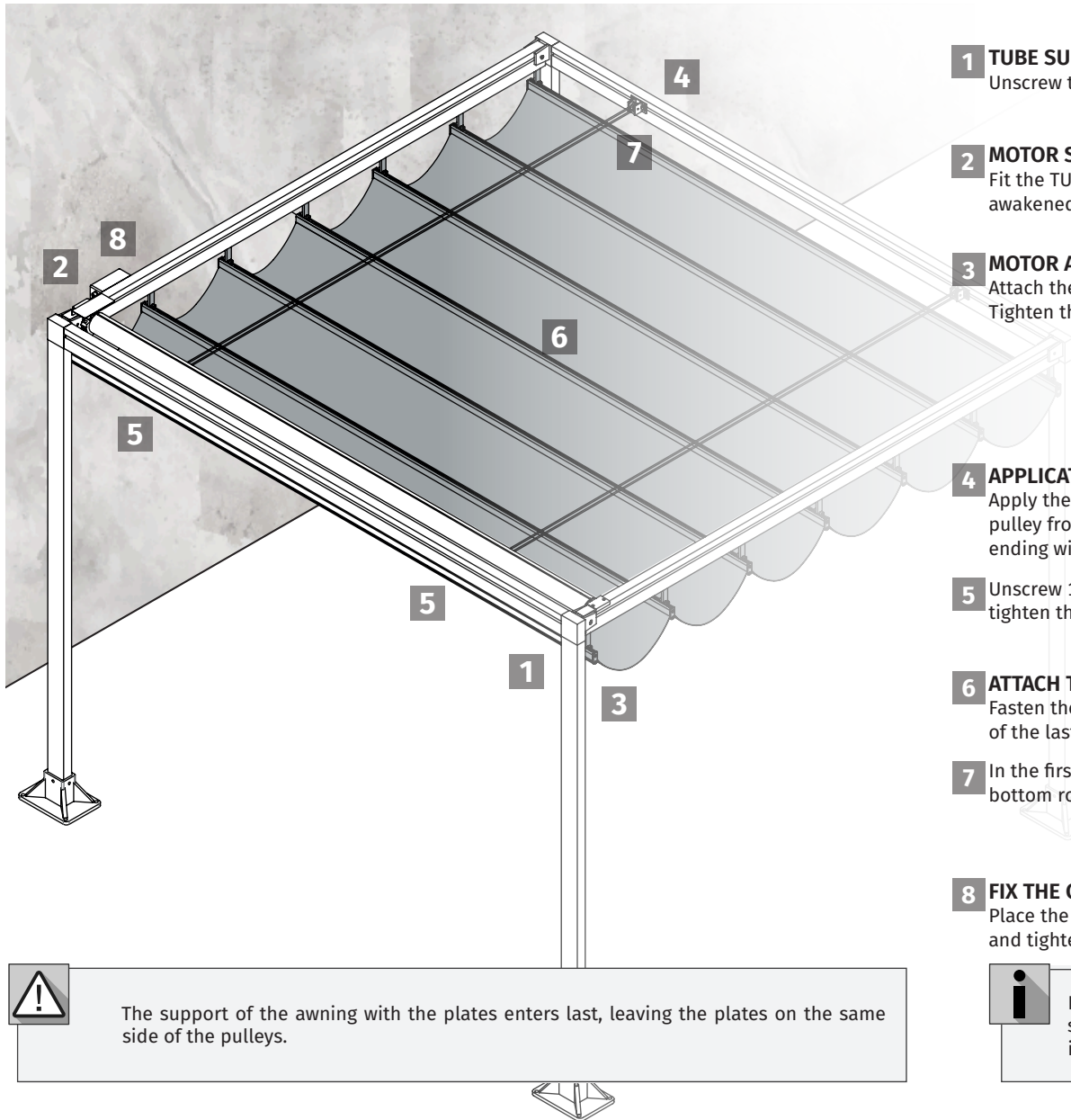
- 1 ATTACH VERTICAL PROFILES**
Attach the vertical profiles to the shoes. Apply the screw with the washer and nut.
- 2 ATTACH FRONT AND REAR PROFILES**
Attach the front and rear profiles to the vertical profiles.
- 3 ATTACH PROJECTION PROFILES**
Attach the projection profiles to the wall. Then insert the projection profiles into the vertical profiles.
- 4 ATTACH FIXATION PLATES**
Mark the holes in the floor. Drill the holes and place the anchor bolts suitable for the drilled hole. Position the shoes in the holes and apply the screws and their washers.



The screws, bushings and washers **are not** included in the kit.

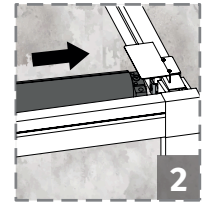
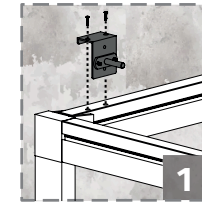
03. INSTALLATION

MOTOR, FABRIC AND CENTRAL INSTALLATION



1 TUBE SUPPORT

Unscrew the bracket screws and remove the part.

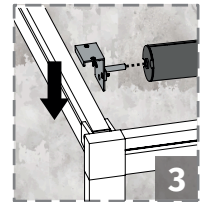


2 MOTOR SUPPORT

Fit the TUB90M8 MT on the opposite side to awaken the support.

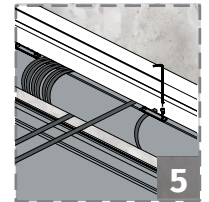
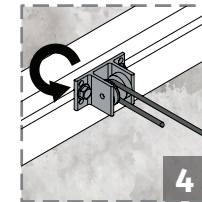
3 MOTOR ATTACHMENT

Attach the stand to the TUB90M8 MT and drop it into the projection profile. Tighten the screws.

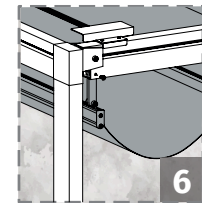


4 APPLICATION OF THE ROPE

Apply the rope, understand it and pass on the pulley from top to bottom, and return to the engine, ending with a turn.



5 UNSCREW 1 PLATE SCREW ON THE TUB90M8 MT AND TIGHTEN THE ROPE IN IT.



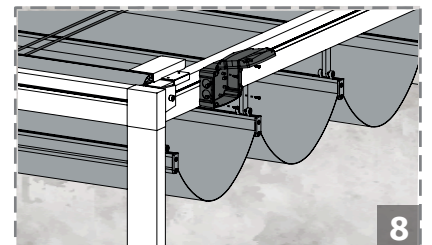
6 ATTACH THE FABRIC

Fasten the fabric by tightening the locking screw of the last bar.

7 IN THE FIRST FABRIC BAR, LOOSEN 1 SCREW AND INSERT THE BOTTOM ROPE. TIGHTEN THE 2 SCREWS.

8 FIX THE CENTRAL

Place the center case in the profile, open the cover, and tighten the 4 screws.



The support of the awning with the plates enters last, leaving the plates on the same side of the pulleys.



It is recommended to use DIN 7981 screws. These screws **are not** included in the kit.

03. INSTALLATION

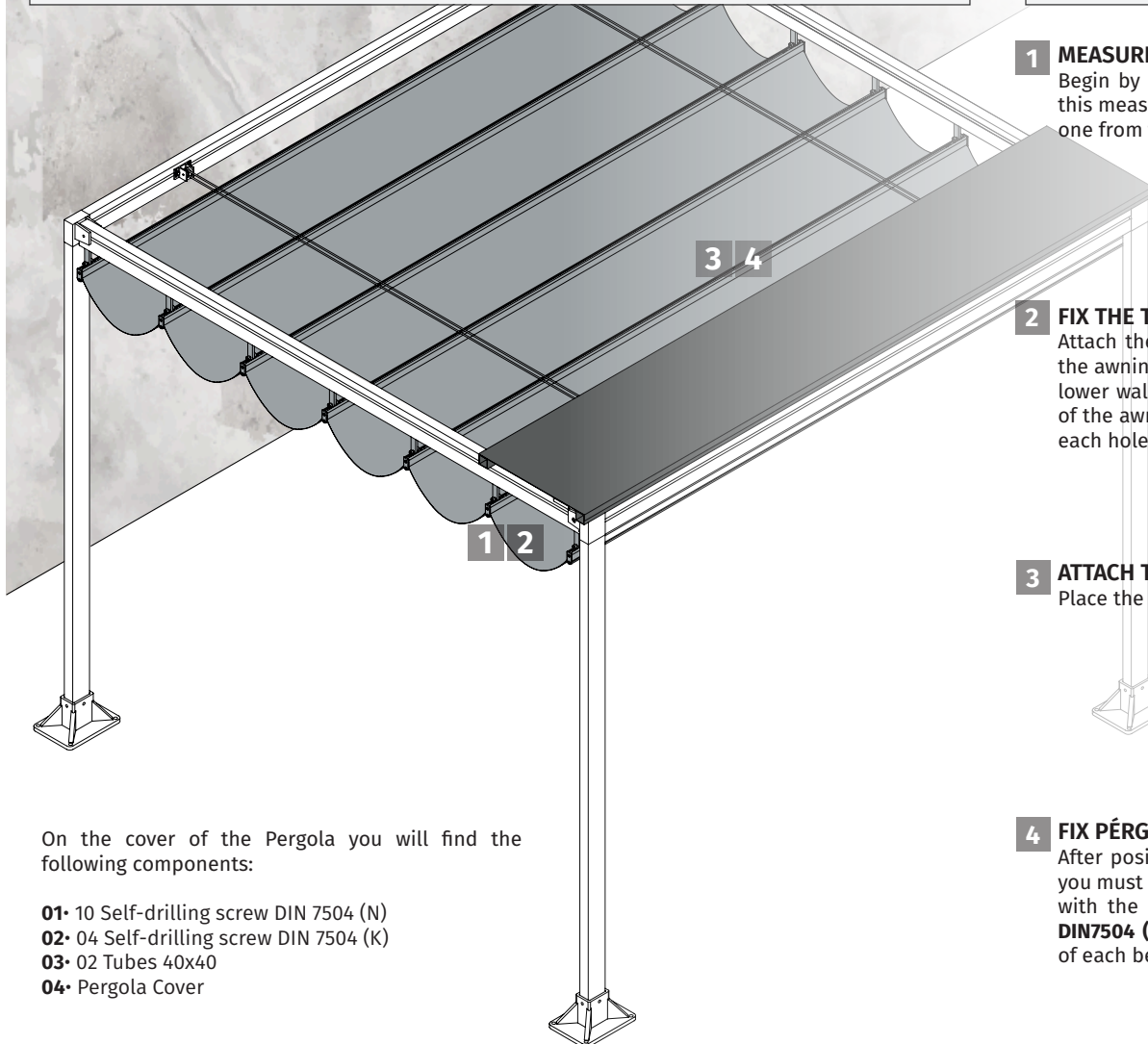
PÉRGOLA COVER INSTALLATION



The Pergola fabric cover is **sold separately**. It has a width greater than the total width of the fabric so that it is totally protected in its extremities.



These first two steps should be repeated on the two support rails as well as on the other side of the awning.

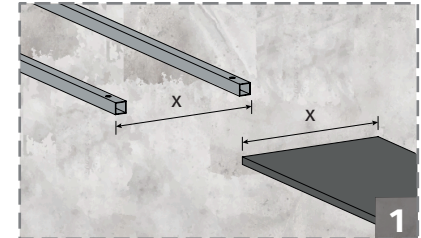


On the cover of the Pergola you will find the following components:

- 01• 10 Self-drilling screw DIN 7504 (N)
- 02• 04 Self-drilling screw DIN 7504 (K)
- 03• 02 Tubes 40x40
- 04• Pergola Cover

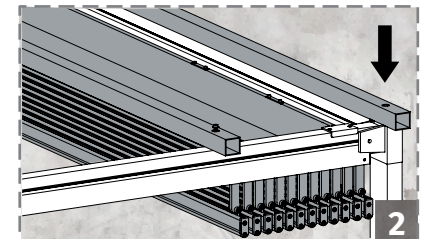
1 MEASUREMENTS

Begin by measuring the width of the cover (**x**). Use this measure (**x**) for the fixing distance of the beams one from the other.



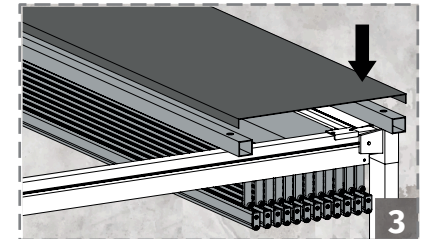
2 FIX THE TRANSFERS

Attach the beams to the frame and attach them to the awning profile by drilling the beam, screwing the lower wall of the support beam with the upper wall of the awning profiles. Use a **DIN 7504 (K)** screw with each hole.



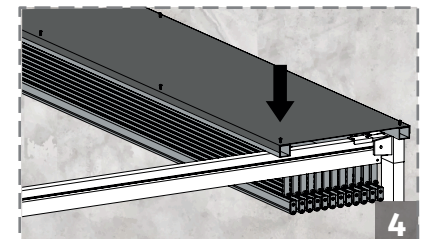
3 ATTACH THE PÉRGOLA COVER

Place the PÉRGOLA cover on top of the support.



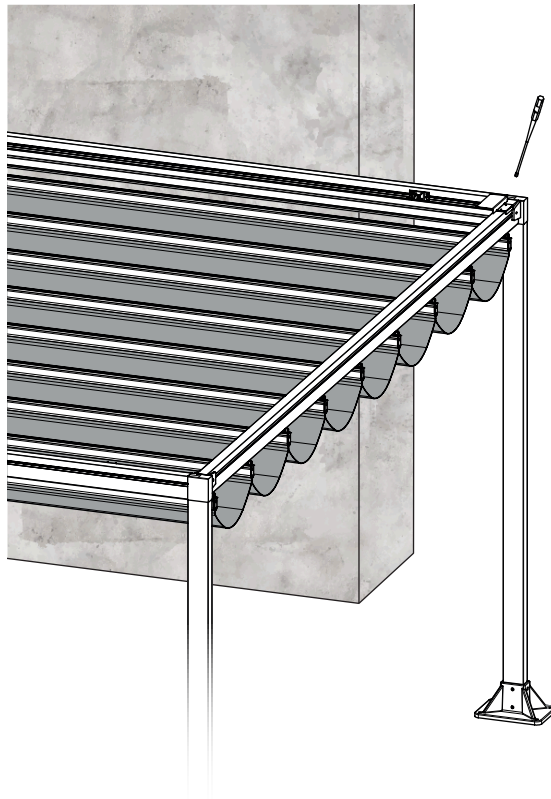
4 FIX PÉRGOLA COVER

After positioning the awning cover in your position, you must secure it to the support beam. One to cover with the upper wall of the beam (**A**) using screws **DIN7504 (N)**. Distribute 10 screws to the the length of each beam.



04. REGULATION

LIMIT SWITCHES

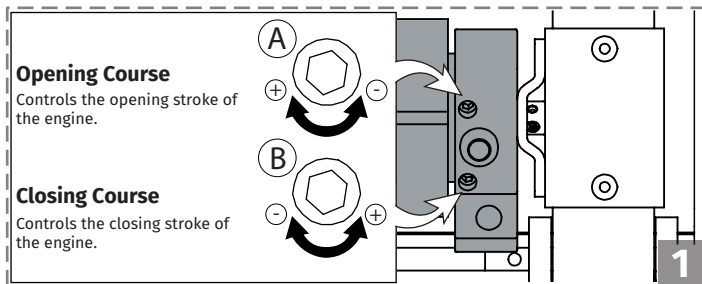


1 LIMIT SWITCHES OF OPENING AND CLOSURE

The motor limit switches are preset at the factory. If you need to make any adjustments, follow the instructions in the image below.

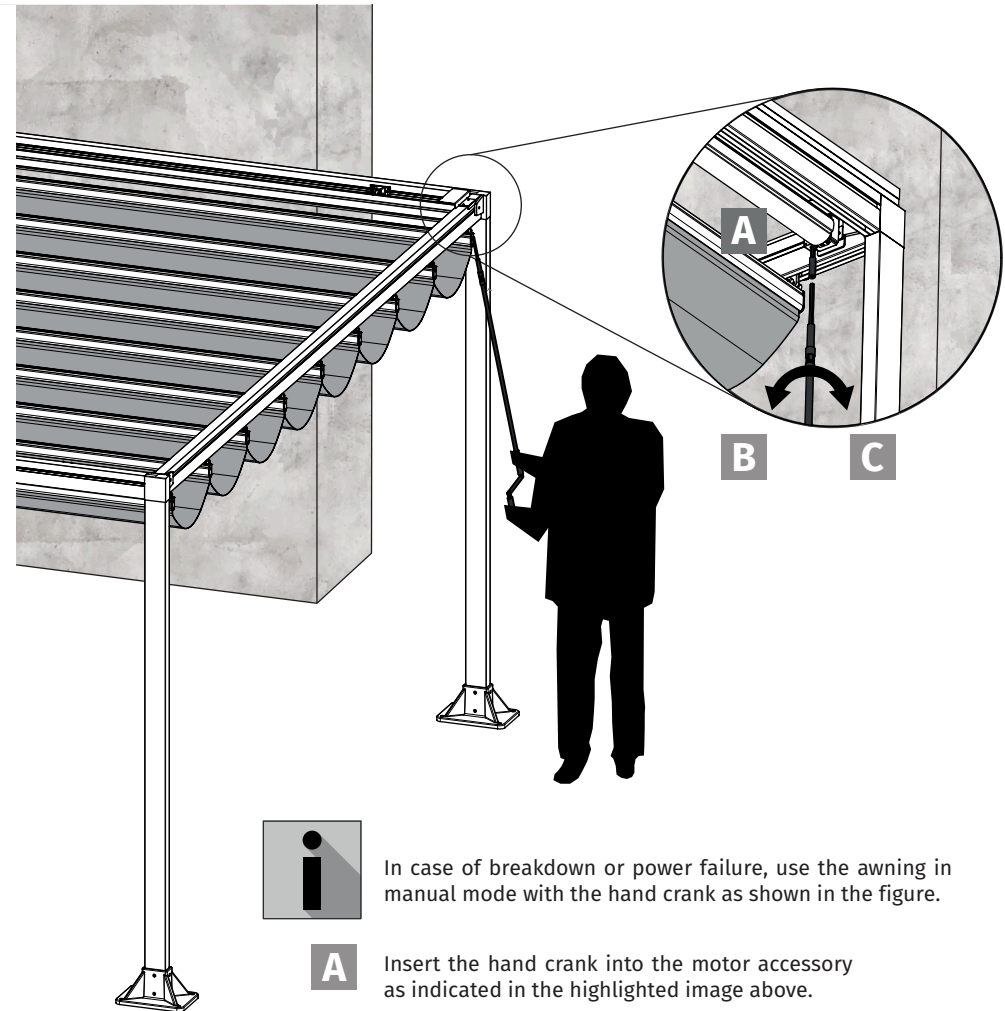
A Limit switch of Opening. Clockwise it opens more, and in the opposite direction it opens less.

B Limit switch of Closing Course. Clockwise closes less, and counterclockwise closes more.



04. REGULATION

MANUAL OPENING/CLOSING



In case of breakdown or power failure, use the awning in manual mode with the hand crank as shown in the figure.

A Insert the hand crank into the motor accessory as indicated in the highlighted image above.

B To close the awning, turn it counterclockwise.

C To open the awning, turn it clockwise.

05. TROUBLESHOOTING

FINAL CONSUMERS AND SPECIALIZED TECHNICIANS INSTRUCTIONS

Problems	Behavior	Procedure
The awning is not secure properly on the wall.	<ul style="list-style-type: none"> The screws are not suitable for the wall structure. 	<ul style="list-style-type: none"> Check the installation measures. Check that the number of screws is sufficient and that they are indicated in this manual.
The awning does not remain level after opening.	<ul style="list-style-type: none"> Changes to the tarpaulin after several maneuvers. 	<ul style="list-style-type: none"> Check the level of the wall brackets. Check the level of the square tube.
The top does not close in full.	<ul style="list-style-type: none"> Defacing the top or limit switch. 	<ul style="list-style-type: none"> Tune the motor limit switches.
The awning does not work and the motor makes no noise.	<ul style="list-style-type: none"> The motor enters thermal protection after 2 openings and 1 lock. 	<ul style="list-style-type: none"> Wait 20 minutes.
The awning does not work and the motor makes no noise.	<ul style="list-style-type: none"> Protection problem. 	<ul style="list-style-type: none"> Check the motor connection. Check engine operation by connecting directly to mains.